

OFFICE OF THE CARDINAL
1011 FIRST AVENUE
NEW YORK, NY 10022

March 25, 2017
Season of Lent

Dear friends in the Lord:

By participating in the *Catholic Relief Service (CRSC)* collection, you are responding to Jesus in disguise in some of the most marginalized communities in our world. *Catholic Relief Service* collection provides services for immigrants, humanitarian aid in the wake of natural disasters, refuge for the displaced, and advocacy for peace and justice around the world. Let us join together in this special collection to support those who are suffering and are on the margins of society.

For example, in Niger, changes in climate in Western Africa are adversely affecting poor and rural farmers. No matter how hard these farmers work, droughts are shortening the rainy season, leaving harvests too small to support families and communities. Your support of the *Catholic Relief Service* collection is helping connect businesses that provide drought-resistant seeds to these communities. These new relationships are providing hope to these communities for a sustainable future.

Your support of the *Catholic Relief Service* collection makes a difference for so many around the world. Please prayerfully consider how you can support it this year. If you want to learn more about the collection and the people who benefit, please visit www.usccb.org/catholic-relief.

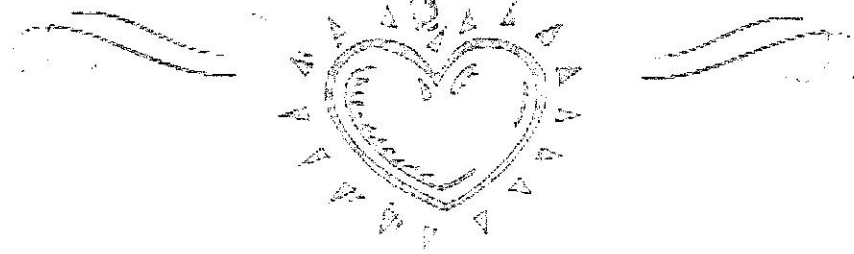
With prayerful best wishes for a blessed Lenten season, I am,

Faithfully in Christ,

+ 

Timothy Michael Cardinal Dolan
Archbishop of New York

Outreach Ministry



ARE YOU A LOCAL SENIOR CITIZEN WHO NEEDS
HELP WITH TRANSPORTATION?

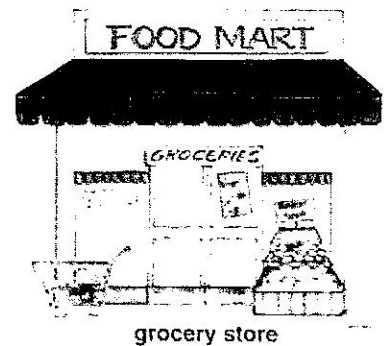
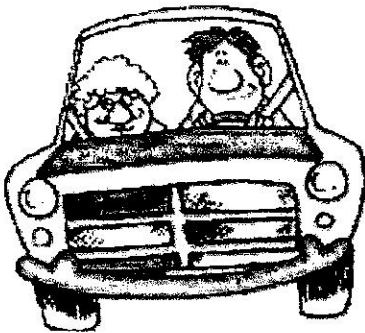
WE HAVE A TEAM OF WONDERFUL AND CARING PARISHONERS WHO WILL
PROVIDE TRANSPORTATION TO

A DOCTOR'S APPOINTMENT,
A PHARMACY OR GROCERY STORE,
OR GETTING TO AND FROM MASS

WE CAN ALSO VISIT WITH YOU OR DO AN OCCASIONAL ERRAND FOR YOU.

PLEASE CONTACT ST. THERESA CHURCH OUTREACH COMMITTEE CHAIRS:
TRUDI DeDONATO 747-3363 OR TRUDIDD@AOL.COM OR
JOAN NECHIS 762-0662 OR JNECHIS@AOL.COM

(YOU DO NOT NEED TO BE A PARISHONER OF ST. THERESA TO QUALIFY)



St. Theresa Church, 1394 Pleasantville Road, Briarcliff Manor, NY